



3D VISUAL PLANNING FOR THE WIND ENERGY INDUSTRY

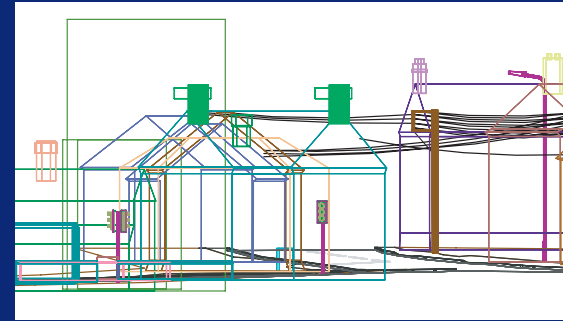
TRANSPORT ASSESSMENTS, SITE ACCESS STUDIES, SWEEPED PATH ANALYSIS, FEASIBILITY STUDIES, TENDER ASSESSMENTS.

SHOWING IT CAN BE DONE (OR NOT).

The use of computer animated software coupled with laser mapping allows Wynns to offer clients a unique opportunity that allows you to view in computer animation an abnormal load carrying vehicle negotiating your actual route to site.

Using state of the art laser survey technology our engineers are able to survey your proposed route, as well as any alternatives, and through the use of specialist software can download the results and model any pinch points. This will, when coupled with the particular vehicle geometry, give you a clear demonstration of the vehicle track during negotiability.

It maybe for presentation purposes that you would like to demonstrate negotiability of a town or village street layout. The mapping system will allow you to animate the vehicle movement and give you views from all conceivable angles in order to satisfy any concerns on access requirements that arise as part of the planning and development process.



A major advantage brought about with this technique is that Engineers, Planners and Public Relations Personnel often require varying levels of information, presentation and aesthetics.

Whilst accuracy is maintained throughout, many of the aesthetic layers required to demonstrate reality, for example, during a presentation to Public Bodies or a planning enquiry are not essential from an engineering perspective and can be removed for clarity or remain unsourced to minimise costs.

Images constructed in collaboration with Reality Mapping & James Watt Automotive

